

Patrick Marsh Middle School
Instrumental Music Department
Chris Gleason, Band Director

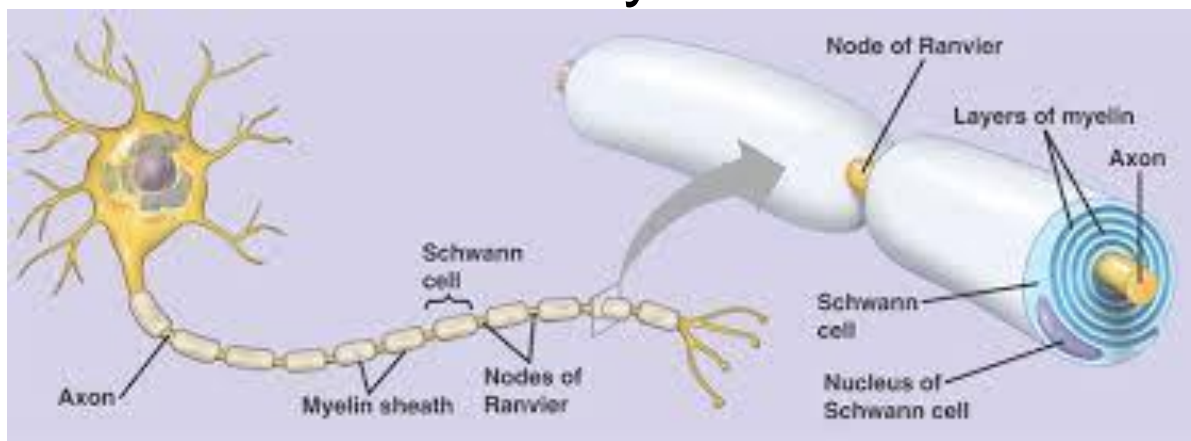
NAME _____

7th GRADE 6th Hour BAND

Third Quarter PORTFOLIO



Build Myelin



My Plan To Practice

Monday	Tuesday	Wednesday	Thursday	Friday	Saturday	Sunday

Moscow 1941

The song identifies with an extremely important moment in history during the Second World War, in which the Red Army, against all odds, successfully defended Moscow against the German invasion. In October 1941, German troops were only 15 miles outside of Moscow, an unfavorable situation for the Soviet Union. Two million people had evacuated Moscow, but Joseph Stalin stayed to rally morale. In November, the Germans launched a new attack on Moscow. The Soviet Army held their ground and brought the Germans to a halt. Stalin insisted on a counterattack; and although his commanders had doubts, they launched their own offensive on December 4. The Germans, caught off guard and demoralized by the recent defeat, were pushed back and began retreating. By January, they had been pushed back nearly 200 miles.



Soviet Army in Counterattack

Moscow Kremlin



The Tune....”Meadowland”

"**Polyushko Pole**" (Meadowland) is a Russian song. It is claimed that the song was originally written during the Russian Civil War and was sung by the Red Army.

For the Soviet variant of the song, the music was by Lev Knipper, with lyrics by Viktor Gusev. Knipper's song was part of the symphony with chorus (lyrics by Gusev) "A Poem about a Komsomol Soldier" composed in 1934. It was covered many times by many artists in the Soviet Union.

Several Western arrangements of the tune are known under the title "**The Cossack Patrol**", particularly a version by Ivan Rebroff, and some under other titles including "Meadowland", "Cavalry of the Steppes" and "Gone with the Wind".

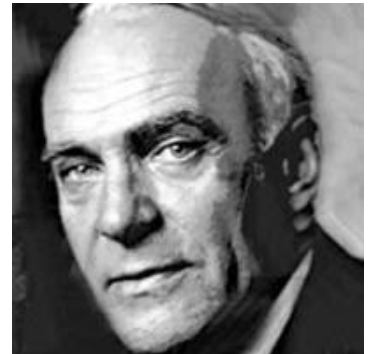
Meadowland:

**Meadowlands, meadowlands,
Through you heroes now are treading
Red army heroes of the nation
Heroes of the mighty Red army, ah!**

**Maidens are weeping
Their solitary vigils keeping
Weeping for their sweethearts who are fighting
Fighting in the mighty Red army, ah!**

**Gay roads are winding
The sunlight on them now is shining
Over them the heroes are passing
Heroes of the might Red army, ah!**

**Let ev'ry maiden
With heart no longer heavy laden
Strike up the singing now more loudly
Sing of fighting song so proudly, ah!**



Lev Knipper

Meadowland

Score

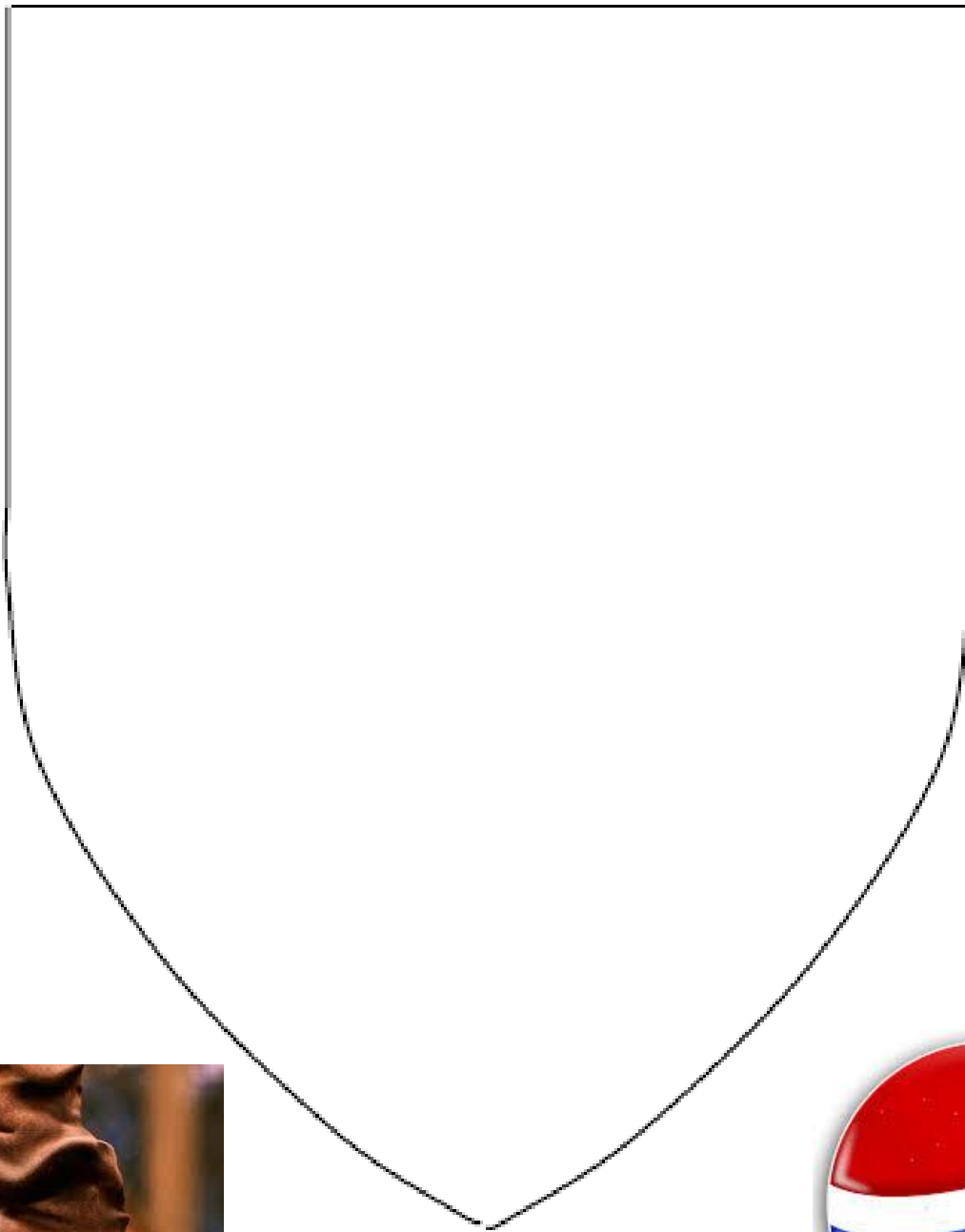
i v i v VI v iv v

The musical score for 'Meadowland' is presented in a multi-staff format. The instruments included are C instr., Bb instr., Eb instr., Horn in F, Bass C instr., and Tuba. The score is written in common time (C) and features a key signature of two flats (Bb and Eb). The notation includes various rhythmic patterns such as eighth and sixteenth notes, as well as rests. A small red padlock icon is visible in the upper right corner of the score area.

Chord Progression

Instrument	i chord	iv chord	v chord	VI chord
C	G-Bb-D	C-Eb-G	D-F-A	Eb-G-Bb
Bb	A-C-E	D-F-A	E-G-B	F-A-C
Eb	E-G-B	A-C-E	B-D-F#	C-E-G
F	D-F-A	G-Bb-D	A-C-E	Bb-D-F

Group Identity



Printed from [Suzy's](#)





What is balance in a band?

Two types:

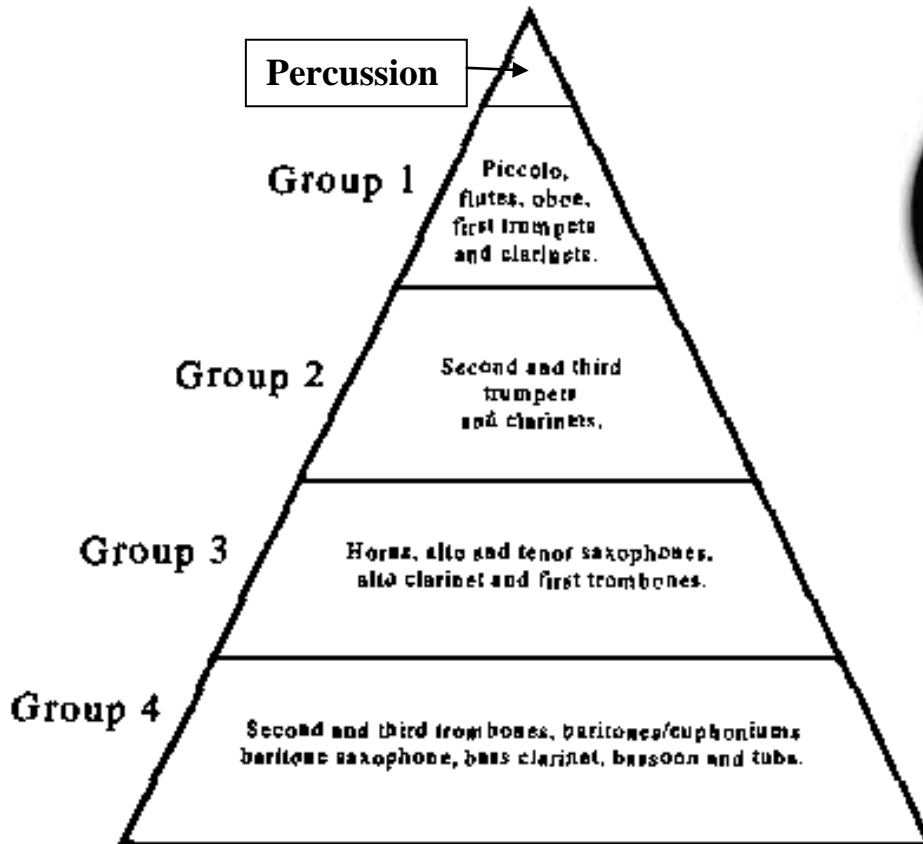
Vertical (chords)



Horizontal (melody, countermelody, bass line)

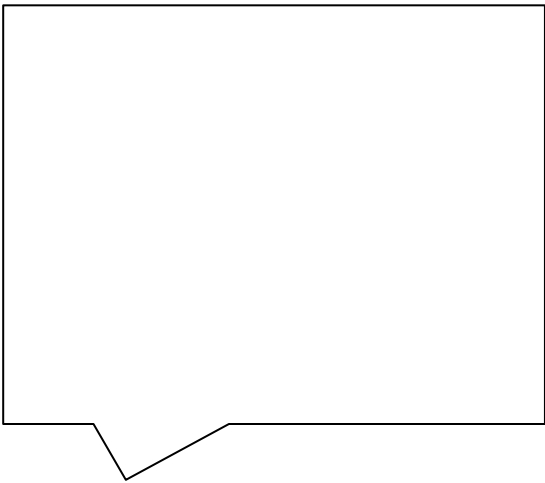
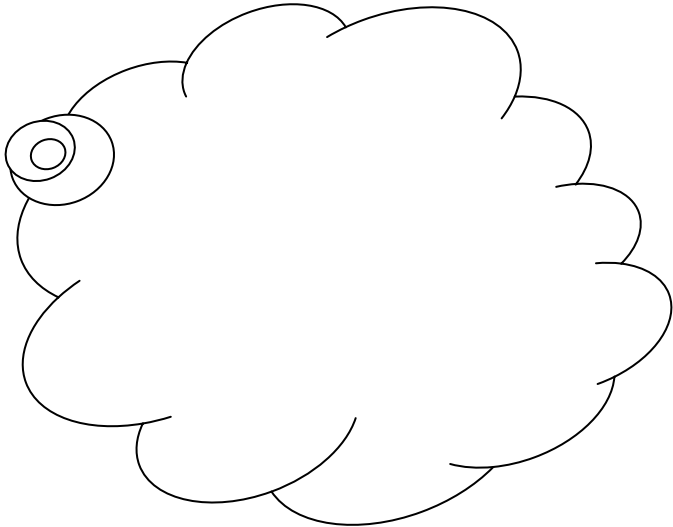
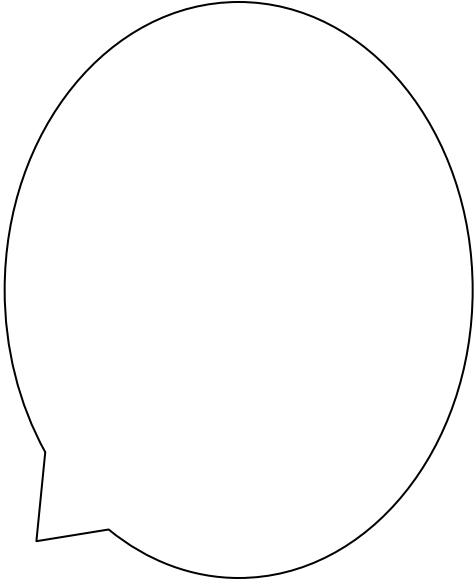
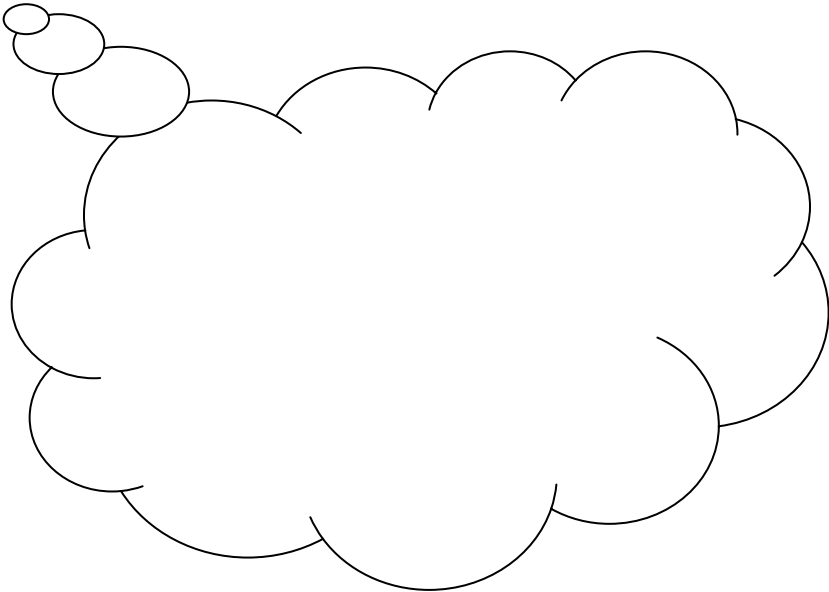


McBeth's Sound Pyramid



The width of the triangle determines the volume. The higher the voice, the softer the sound.

Pride



Living in Harmony



Harmony is _____.

Chords are _____.

Major Scale

1	2	3	4	5	6	7
—	—	—	—	—	—	—

Natural Minor Scale

1	2	3	4	5	6	7
—	—	—	—	—	—	—

Moscow Project Options:

Directions: Your Moscow project is due in band on _____. The project will be included in the assessment for Quarter 3. It will be graded on the following criteria:

Showing Understanding of Content (accuracy)
Effort
Creativity
Timeliness

You may choose a project idea from the list or create your own project. However, if you decide to create your own project, please check it over with Mr.G before you begin. Quality projects will be used in a special video introduction for the music at our Spring Concert.

- 1) Think about a worthy cause or something that could be improved at school or in the community. Create a mission statement that defines the purpose of the group. Find other people that have the same vision and create an action plan. Follow through with the plan and write a report about the success of the plan. You will need to show evidence of the group, mission statement, and positive influence you had.
- 2) Create a video game or board game that would depict the events that occur in this story. The board game must include directions on how to play it and a paragraph explaining how it relates to the story and music.
- 3) Learn a traditional Russian Dance and teach it to the rest of the ensemble. You need to include a brief written description of the dance and it's history. You will need to teach the dance to the rest of the ensemble using traditional Russian music like Meadowlands.
- 4) Pretend you are a newspaper reporter living in Moscow during these events and write an article describing the events as they unfold.
- 5) Create a small band with members of each section based on the sound pyramid. Record yourselves playing Moscow 1941 for 5 minutes each day for one week. Analyze recordings for balance (both types) and show evidence of improvement.
- 6) Oher ideas??? Ask Mr. Gleason. Be creative!

Portfolio Grading Rubric

	4  Flying High!	3  Taking Off!	2  Still On The Runway!	1 (Fix It)  Missed the Flight
Timeliness	All portfolio entries are complete. Introduction is well prepared and thoughtful.	Nearly all portfolio entries are complete. Introduction is good, but could be more thought out.	Most portfolio entries are complete. Introduction is complete, but needs improvement.	Portfolio entries not complete and/or introduction not complete.
Understanding of Content (Accuracy)	Portfolio answers and introduction display evidence of clear understanding.	Portfolio answers and introduction nearly all correct with very few errors.	Portfolio answers and introduction contain mostly correct information, but with some errors.	Project and introduction contains many errors.
Effort	Displayed thought and care in work. Good grammar/spelling.	Good care and effort displayed. Only minor corrections needed.	Some effort is shown, but more effort is needed to complete project.	Student needs to put forth more effort and redo it.
Creativity	Project displays creativity and good planning. Unique!	Project has some creative parts, but could be improved in areas.	Project needs to be more creative. Little imagination displayed.	Not creative or unique. Show your personality.

